



## Material Tested

Full-Spectrum Hemp Oil [Peppermint] - 1200mg  
For: Vital Plan, Inc.  
Lot #: 201029G  
Purpose: Determination of Cannabinoids Content by HPLC  
Sample ID: 20363KOB, Plate #: 147529

## What We've Tested

We tested this sample by High Performance Liquid Chromatography. HPLC is a technique for separating, identifying, and quantifying compounds that are present in a sample.



## Conclusion



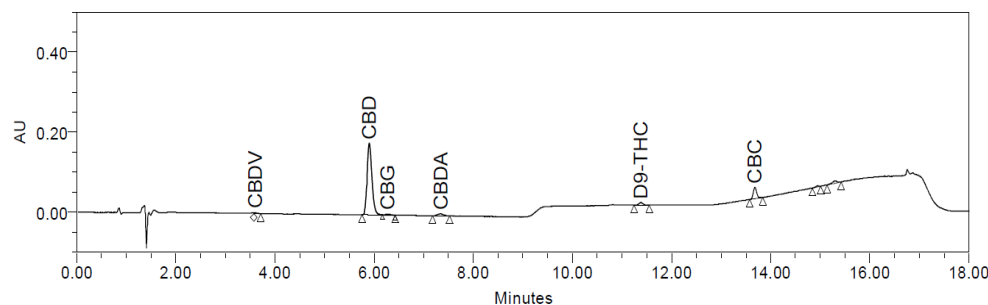
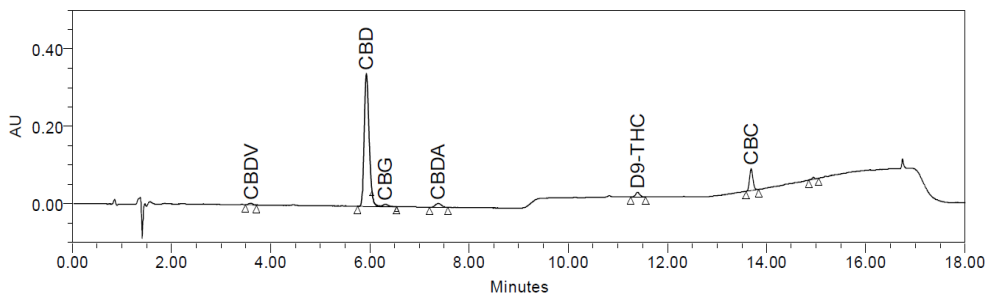
This "Full-Spectrum Hemp Oil [Peppermint] - 1200mg" test sample contains an average of 40 mg/mL CBD and less than 0.3% THC on the as is basis.

The HPLC method used was developed and validated by Alkemist Labs and/or is a Scientifically Valid method.



## Test Details

### High Performance Liquid Chromatography (HPLC)



We tested this sample against reference standards of known purity to determine its content in the Test Sample.

We tested the sample to make sure that it meets quality specifications for strength.



Vital Plan

Sample: 2101DEL0013.0045

AZ 85022  
ryan.burke@vitalplan.com  
(336) 708-6774  
Lic. #

Strain: Green Cherry  
Lot#: 201029G; Batch#: 201029G; Batch Size: - grams  
Sample Received: 01/11/2021; Report Created: 01/14/2021  
Testing Completed: 01/13/2021

Full Spectrum Hemp Oil (Peppermint) - 1200mg

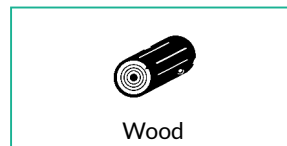
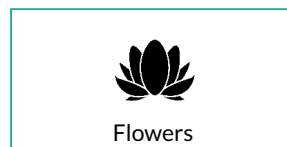


Ingestible, Tincture, CO2  
Lab Internal ID:

Terpenes

Analyte	LOQ PPM	Mass PPM	Mass %
α-Pinene	54	ND	ND
Camphene	54	ND	ND
β-Myrcene	57	ND	ND
β-Pinene	56	ND	ND
δ-3-Carene	56	ND	ND
α-Terpinene	58	ND	ND
trans-Ocimene	60	ND	ND
δ-Limonene	56	ND	ND
p-Cymene	57	ND	ND
cis-Ocimene	61	ND	ND
Eucalyptol	42	ND	ND
γ-Terpinene	59	ND	ND
Terpinolene	60	ND	ND
Linalool	73	<LOQ	<LOQ
Isopulegol	74	<LOQ	<LOQ
Menthol	16	18401	1.84
Geraniol	11	201	0.02
β-Caryophyllene	66	267	0.03
α-Humulene	64	124	0.01
cis-Nerolidol	125	246	0.02
trans-Nerolidol	127	242	0.02
Guaiol	140	242	0.02
α-Bisabolol	194	267	0.03

Primary Aromas



**2.02%**  
**20,215 PPM**  
Total Terpenes

LOQ = Limit of Quantitation; The reported result is based on a sample weight with the applicable moisture content for that sample; Unless otherwise stated all quality control samples performed within specifications established by the Laboratory. ND = Not Detected; NT = Not Tested; NR = Not Reported

